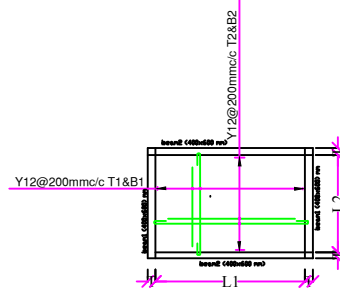
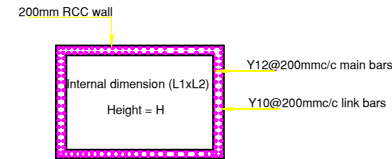


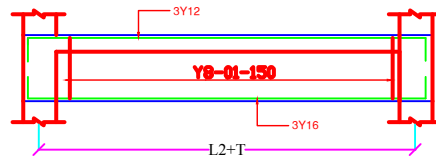
TOP PLAN



slab detail (thickness=200mm)



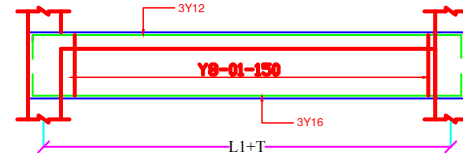
RCC wall detail thickness=200mm



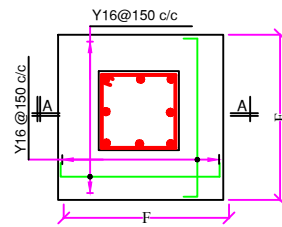
Bars details for beam(1)

	TANK SIZE	
	10M3	25M3
L1	3m	5m
L2	2m	2.5m
T	200mm	200mm
H	1.67m	2m
F	1300mm	1400mm
C	350x350 mm	400x400 mm
F1	400mm	400mm

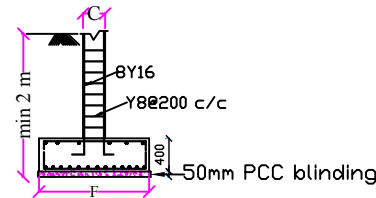
Tank size / Dimensions Table



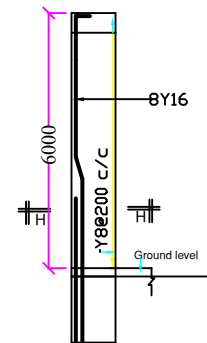
Bars details for beam(2)



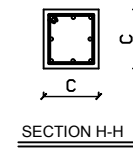
TYPICAL COLUMN BASE (4No.)  
1400X1400X400



SECTION A-A



TYPICAL COLUMNS DETAIL (4 No)



SECTION H-H

## NOTES

- All dimensions are in millimeters unless stated otherwise
- Reinforced concrete for all elements should be class 20 (1:2:4) 1 for cement 2 for sand , 4 for aggregate
- The washout pouring to be directed to a chamber away from tank foundation to prevent erosion

## REVISIONS

Date	Suffix	Descriptions

## PROJECT

Water Supply Facilities in Somalia

## Drawing Title

6m HIGH ELEVATED  
CONCRETE WATER  
TANK DETAILS  
Sheet 2 of 2



Design	Eng Osman Hassan	Date
Checked		
Approved		Jan 2020
JOB No.Qc/FEB.		